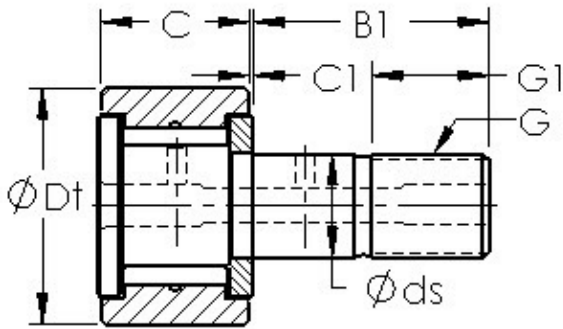




PCD?ITALIA ?Limited



AST CF12 needle roller bearings

Bearing No. CF12

Bearing Type	Full Complement
Dynamic Load Rating (Cr)	1,210
Static Load Rating (Cor)	1,780
Max Speed (Grease) (X1000 RPM)	6,000
Tire Outer Dia. (Dt)	0.750
Stud Dia. (ds)	0.375
Tire Width (C)	0.500
Tire Washer Width (C1)	0.031
Total Length (B)	1.406
Stud Length (B1)	0.875
Threads (G) - 3/8-24 UNF	3/824 UNF
Thread Length (G1)	0.375
Weight (g)	34.00
Material - Stud and Roller head: Hardened carbon steel alloy, Needle rollers	52100 Chrome steel or equivalent

CF12 Bearing 2D drawings and 3D CAD models