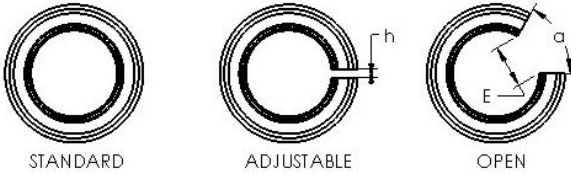
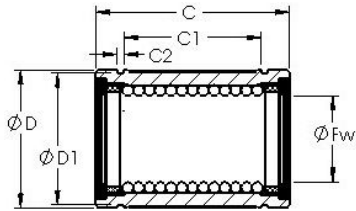




AST LBB 10 AJ linear bearings

Bearing No. LBB 10 AJ



Bore Diameter	15,875 mm
Bearing Type	adjustable clearance type
Dynamic Load Rating (Cr)	95
Static Load Rating (Cor)	243
Shaft Dia. (Fw)	0.625
Outside Dia. (D)	1.125
Length (C)	1.500
Groove-to-groove length (C1)	1.104
Groove Width (C2)	0.056
Groove Dia. (D1)	1.075
Adjustable Open Gap (h)	0.094
Weight (g)	64.00
Material	52100 chrome steel, or equivalent

LBB 10 AJ Bearing 2D drawings and 3D CAD models